

# The Youth Transitions Study



Robyn Munford - r.munford@massey.ac.nz  
Jackie Sanders – j.sanders@massey.ac.nz

With grateful thanks to **The Ministry for Science and Innovation** who have funded the research and to **Mike Ungar** and **Linda Liebenberg** in Canada who conceptualised the original Pathway study and have supported the development of the research.

# The Study

1. National study
2. Subset of youth from a larger study
3. Young people who have
  1. disengaged early from education
  2. faced a range of challenges outside the 'normal' range
4. Mixed method, multi stage
5. Ecological model
6. Longitudinal
7. Examines
  1. pathways to adulthood
  2. profiles changes in education, employment and identity
  3. identifies changes in risk and resilience
8. Key research questions:
  - How do young people who have faced numerous challenges navigate a pathway to adulthood?
  - What supports them in doing this safely and successfully?
  - What gets in the way?

# Has been supported by a large number of Community Organisations

## Auckland Youthline

AIMHI Alternative Education Consortium  
Auckland Central Alternative Education Consortium  
Best Training  
Bluelight  
Dingwall Trust  
Genesis Project  
Glenfield AOG youth  
Korowai Manaaki  
Martin Hautus Institute  
Strive Trust  
Whakatakapokai  
2 Much YDP

## Christchurch

PSUSI Presbyterian Support  
Upper South Island  
198 Youth Health  
The Collaborative

## Horowhenua/Kapiti Coast

KYS – Kapiti Youth Support  
Horowhenua Learning Centre

## Palmerston North

START

Highbury Whanau  
Centre

YMCA Palmerston North

Te Aroha Noa

Community Services

YOSS Palmerston North

## Taupo/Bay of Plenty and Northland

Cafe For Youth Health  
Te Runanga O Ngati Pikiao  
SWIS / Ngapuhi Iwi Social Services

## Dunedin

Otago Youth Wellness Trust  
Mirror Youth Day Programme  
Mirror Counselling Service  
Kokiri Training Centre  
London House Learning Centre  
Corstophine Baptist Community Trust  
Adventure Development Ltd

## Wellington

South Pacific Academy  
YMCA  
Challenge 2000  
City Mission  
EVOLVE  
Mission for Youth  
BGI  
Porirua Alt School  
VIBE  
Wellington Activity Centre  
Porirua Activity Centre  
Strengthening Families

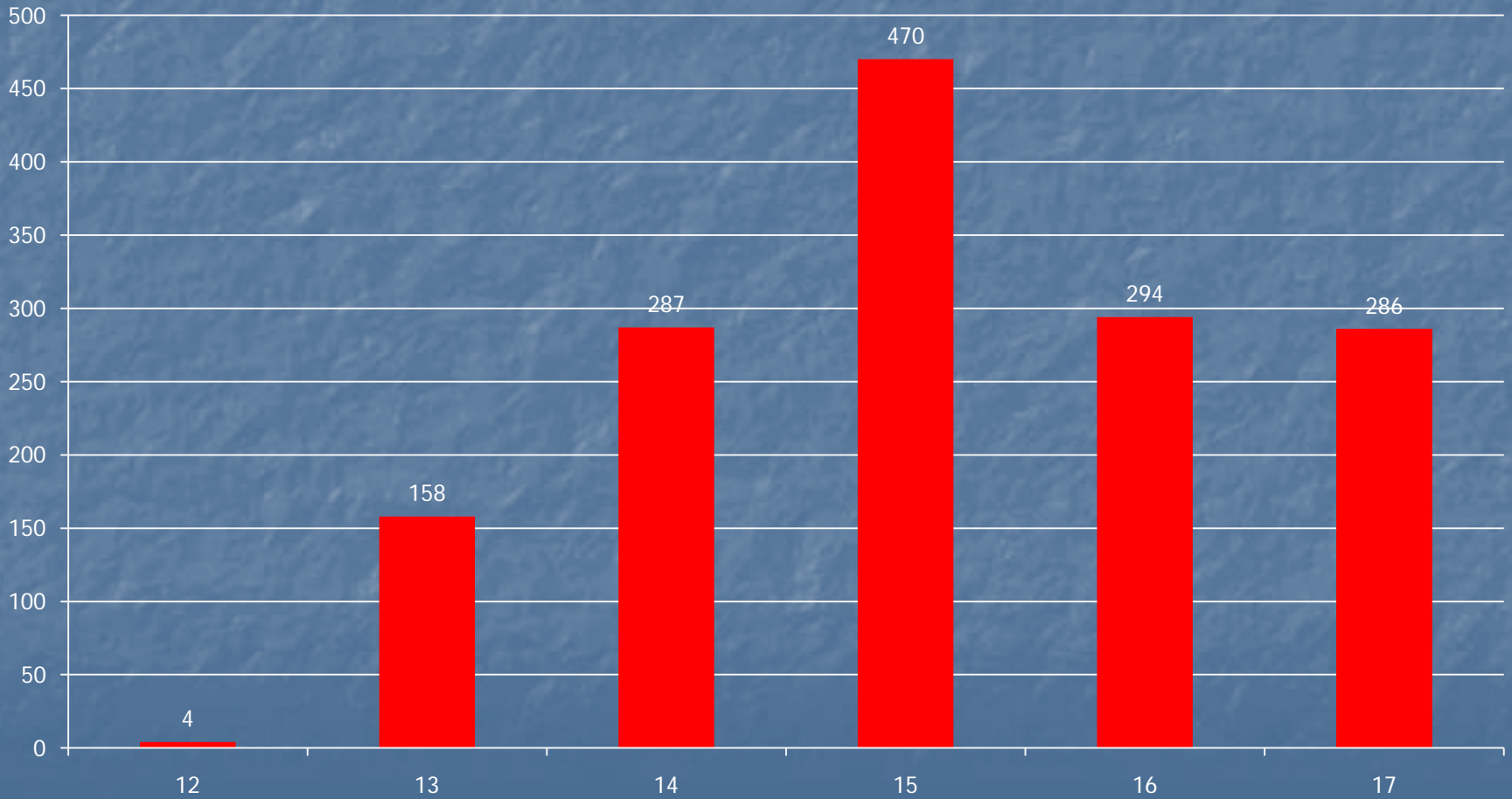
# Where are we up to?

- Time 1 complete
- Time 2 – ongoing
- Commenced Time 3 in June 2011

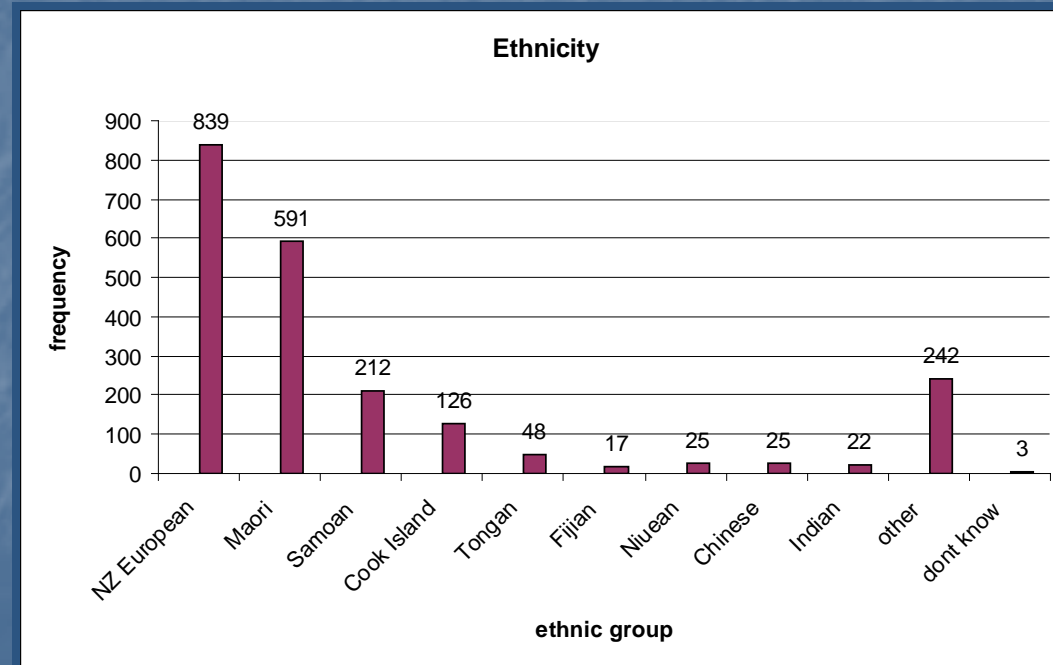
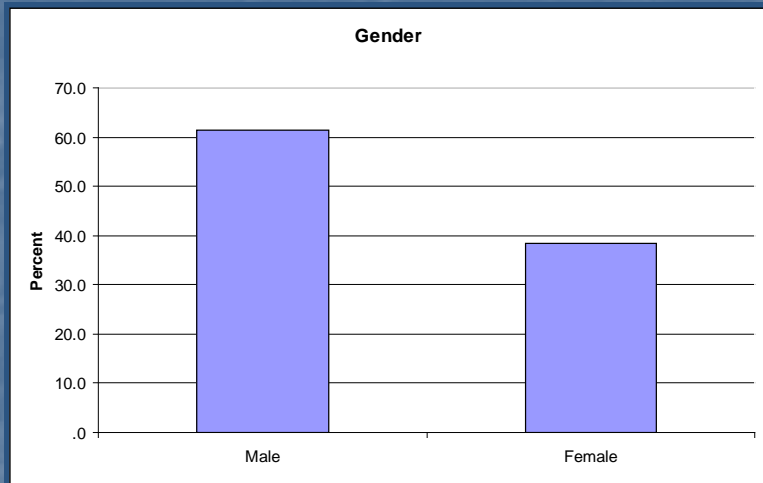
# Who is involved?

- 1499 youth April 2009- Dec 2010
- 616 High Service Users – a subset of these form the Transitions Study
- 880 Comparison Group –baseline comparisons
- 12-17 years of age
- First interviewed in Auckland, Manawatu, Kapiti, Wellington, Dunedin

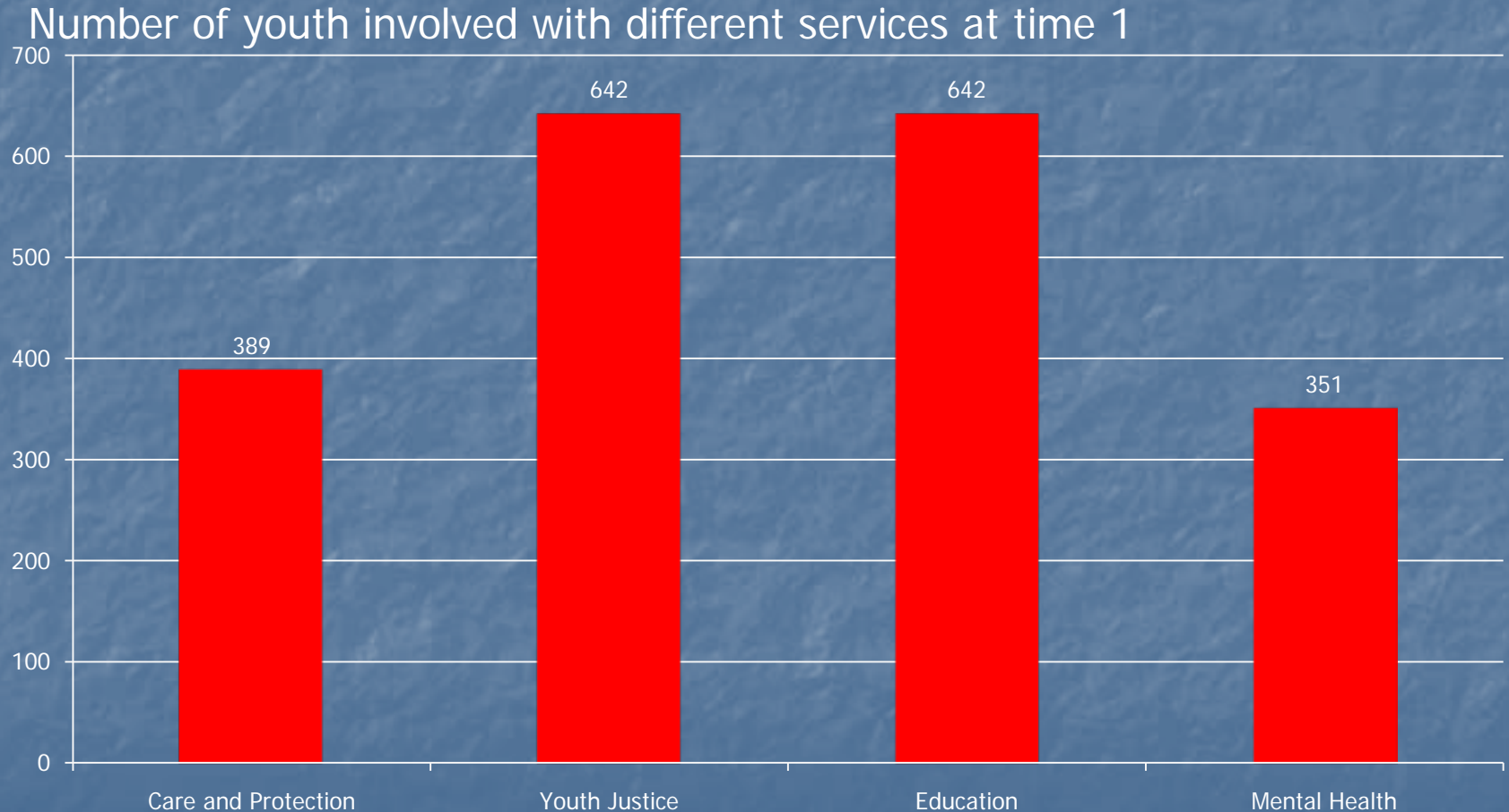
# Age at Time 1



# Gender and Ethnicity at Time 1



# Service Involvement at Time 1



# What have we learned so far?

- Think about transitions more widely
- Think about the role of schools as central in young people's lives
- Think about how risk and resilience factors work together
- Look realistically at what opportunities are available